

Corners to be Indexed
 E1/4 27-106-41

I hereby certify that this document and the data contained herein was prepared by me or under my direct supervision.

Daniel L. Bueltel
 Daniel L. Bueltel
 License No. 43844

Aug 6, 2019
 Date

STATE OF MINNESOTA, }
 COUNTY OF MURRAY, } ss.

I hereby certify that the within Instrument was filed in this office for record on the 13TH day of DECEMBER A.D. 20 19 at 9:00 o'clock A. M., and was duly recorded as Document No. _____

Evelyn C. Larson
 Evelyn C. Larson
 County Recorder

CERTIFICATE OF LOCATION OF GOVERNMENT CORNER

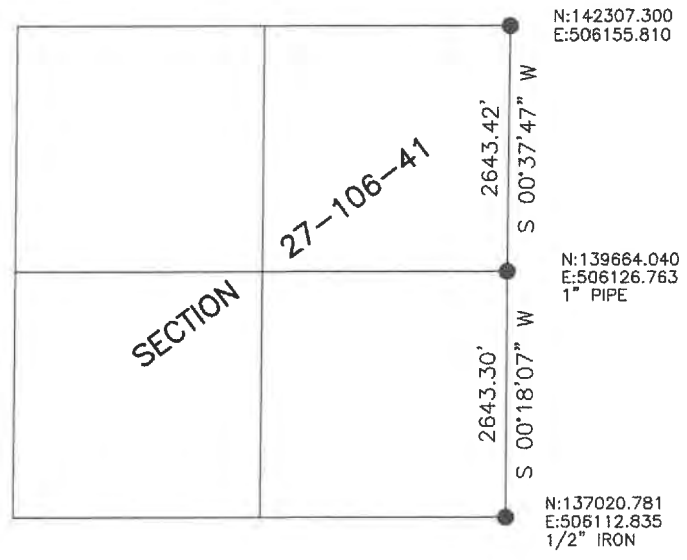
Land survey monuments situated in Section 27, Township 106, Range 41, 5TH P.M.
 STATE OF MINNESOTA, County of MURRAY

STATEMENT OF EVIDENCE:

- 1861 - Original Government Survey.
- 1973 - Murray Co. Hwy. Dept. found a steel pin.
- 2012 - Murray Co. Hwy. Dept. found a steel pipe.



- FOUND MONUMENT
- SET MONUMENT



Minnesota State Plane Coordinate
 System Murray County Datum NAD83 (1996)

Statement of Evidence

E1/4 27-106-41

In 1861, L.G.M. Fletcher did the original subdivision of the township.

On August 10, 1973, the Murray County Highway Department found a steel pin at the corner.

On May 1, 2012, the Murray County Highway Department found a 1" steel pipe at the corner.

On July 10, 2017, Bueltel-Moseng Land Surveying found a 1" pipe at the corner.